

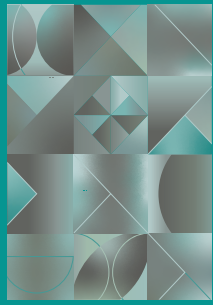


**CLERKENWELL**

Angled Walk / Circle Top View / Ely Place /  
Time Piece / Three Corners / Travelling Line /  
Triangular Path / Watchmaking

Milliken™





## INSPIRED. INSPIRING.

### Millitron® Digital Colour Placement Designs

A rich and diverse community once known for its traditional craft-making skills. A secret village of passageways and ancient buildings, with a history of political intrigue twisting around every corner.

A place re-energised and transformed into one of the most important design hubs in the world. Clerkenwell, a place where things happen and people get inspired.



Time Piece TPE139-118 Zetter's Pools  
Circle Top View CTV152-119-118 Coin Laundry  
Watch Making WMG152-139-118 Casting Iron  
Naturally Drawn, Watercolour Lesson WLN 13-139-140 Windfall







COORDONNÉS  
KOMBINATIONEN  
COORDINADOS

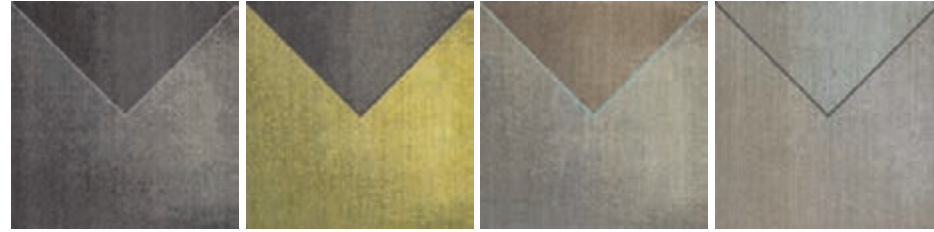
GREY /  
GUNMETAL

CHARTREUSE /  
GREY

LINEN /  
BROWN

PARCHMENT /  
NEUTRAL

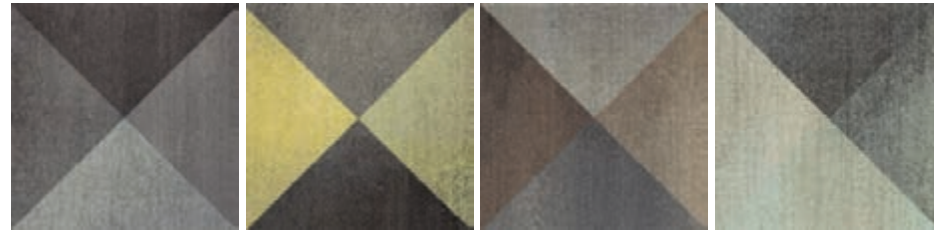
Angled Walk



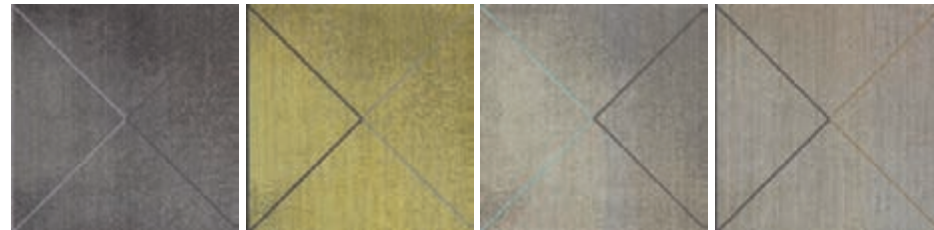
Ely Place



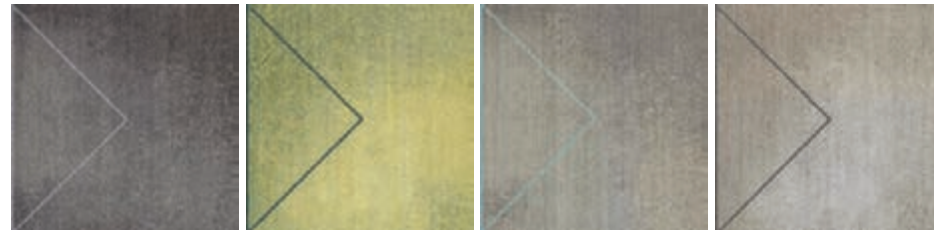
Three Corners



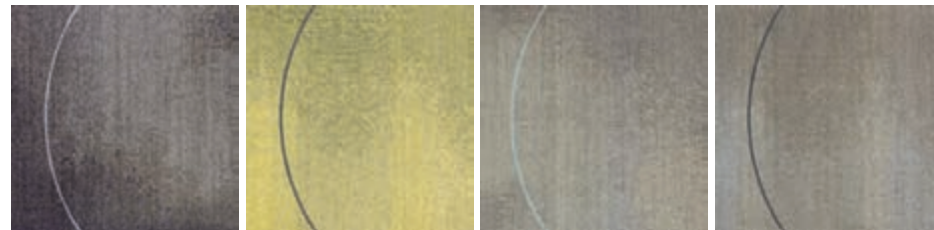
Travelling Line



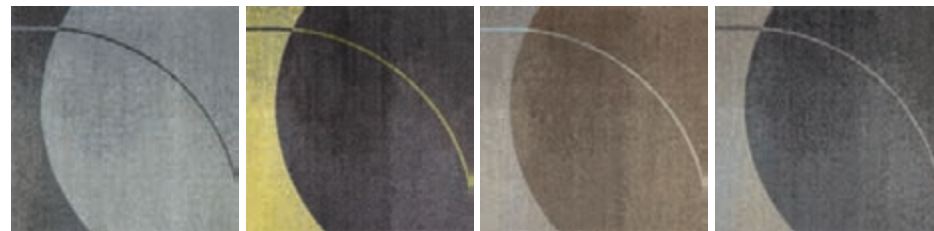
Triangular Path



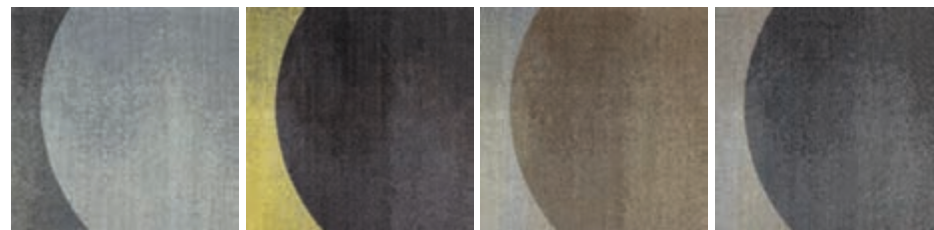
Circle Top View



Watch Making



Time Piece



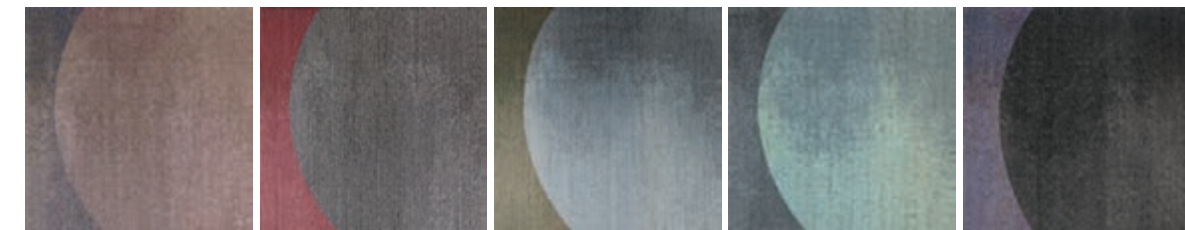
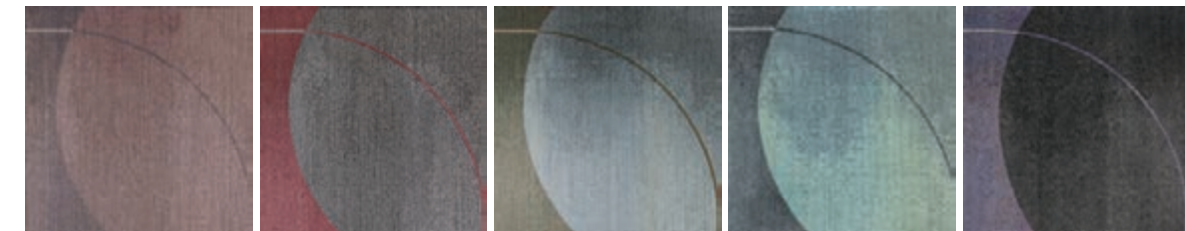
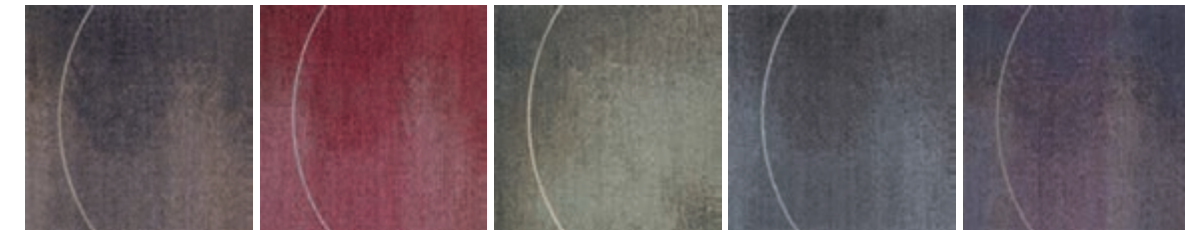
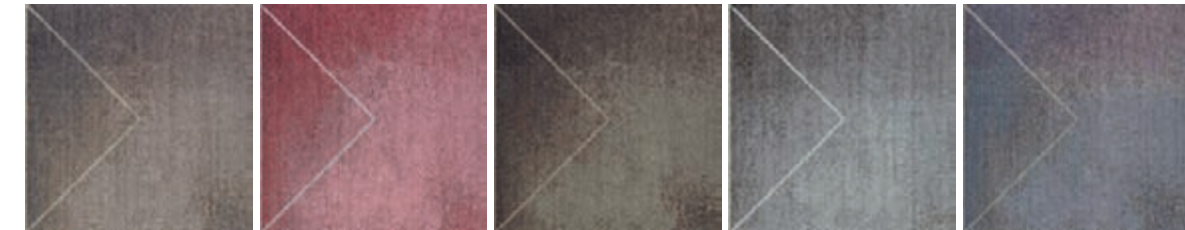
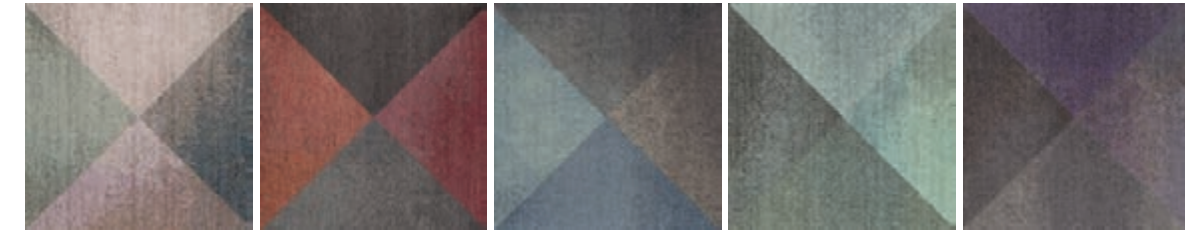
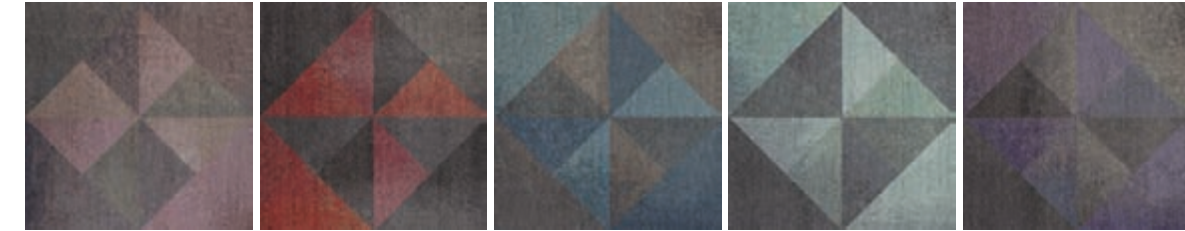
VIOLET /  
SHELL

PINK /  
SUNSET

BLUE /  
SMOKE

AQUA /  
MINERAL

PURPLE /  
THISTLE



From left to right  
De gauche à droite  
Von links nach rechts  
De izquierda a derecha

Hatter's Heights / Horseshoe  
Luck / The Flintlock /  
Turning Page / The Scullery /  
Design Debate / Rook's Nest /  
Georgian Footsteps /  
Old Haunts

Unjust Judge / Mazed Garden /  
Rich Distiller / Old Antiquary /  
Poet's Plot / Turned Jeweller /  
Lucid Writings / Author's Mark  
/ Crafted Fortunes

Crook's Lair / Saffron Hill /  
Brewhouse Yard / Strong  
Opinion / Typesetting /  
Mosaic Gem / Tolpuddle /  
Creating Order / Secret Village

Jack Dawkins / Novel  
Character / Gentleman's  
Portrait / Vestry Minutes /  
Ironmonger's Row / Fifteen  
Puzzle / Architect's Plan /  
Charcoal Merchant /  
Notebook Plots

Tailor Made / Full Bloom /  
Cloth Peg / Dame Purecroft /  
Sword Buckler / Lady Justice  
/ Fog House / Behind Bars /  
Velvet Cap

Sorrell's London / Pear Tree /  
Broadside / Silver Cased /  
Royal Row / Social Affair /  
Cackle Tub / Coin Laundry /  
Dram Shop

Turn Style / Without Question  
/ Sugden's Dictionary / Queen  
Curves / Design Philosophy /  
Percy Circus / Crossing Tracks  
/ Casting Iron / Sydney Grove

Fifty Guineas / Well Curated /  
Gentry's Own / Engine Turner /  
Silken Purse / Five Stops /  
Cold Bath / Zetter's Pools /  
Grand Avenue





AGW152-139-118 Georgian Footsteps



AGW180-118-174 Hatter's Heights



AGW118-108-103 Horseshoe Luck



AGW172-124-144 The Flintlock



AGW13-83-144 Turning Page



AGW48-181-149 The Scullery



AGW171-33-104 Design Debate



AGW48-118-173 Rook's Nest



AGW152-139-118 Georgian Footsteps



AGW171-181-38 Old Haunts

The Clerkenwell collection is a multi tile design — composed of 16 individual tile elements to create one single design. Orders will ship as a randomised assortment of all 16 elements.

Nos designs Clerkenwell sont des créations à multiples dalles - composés de 16 éléments de dalles individuelles afin de créer un motif unique. Les commandes sont expédiées avec un assortiment aléatoire de tous les 16 éléments.

Die Clerkenwell Designs sind Multi-Fliesen Designs - die aus 16 unterschiedlichen und individuellen Einzelfliesen bestehen, um ein einheitliches Muster zu erzeugen. Die Zusammenstellung der 16 Einzelfliesen in den Kartons erfolgt per Zufallsprinzip.

Los diseños Clerkenwell Colour los componen varias losetas - hay 16 elementos diferentes para crear un solo diseño. Cada pedido contendrá una selección aleatoria de los 16 elementos diferentes.



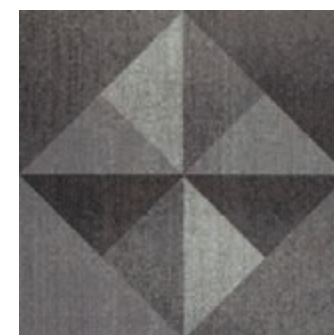
10

For service details see page 27  
 Pour connaître les détails du service, allez à la page 27  
 Unsere Service Information finden Sie auf Seite 27  
 Para detalles sobre nuestras opciones de servicio, vea la página 27

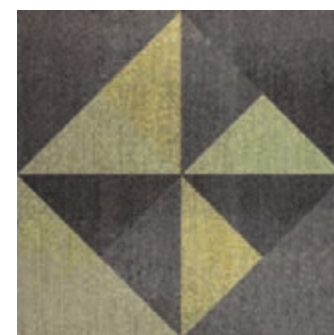




Ely Place ELP180-79-174 Unjust Judge  
Three Corners THC180-79-174 Crook's Lair



ELP180-79-174 Unjust Judge 10



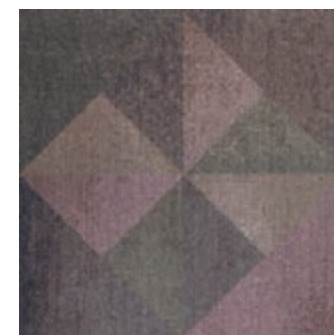
ELP103-79-108 Mazed Garden 10



ELP13-124-15 Rich Distiller 10



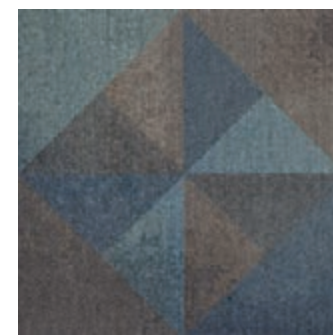
ELP27-83-144 Old Antiquary 10



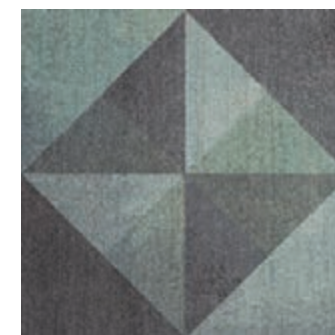
ELP149-173-181 Poet's Plot 10



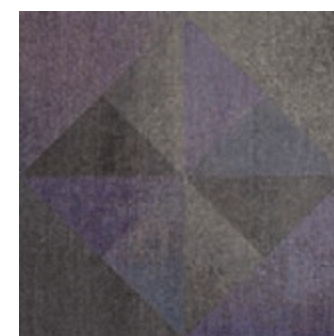
ELP33-137-79 Turned Jeweller 10



ELP131-158-118 Lucid Writings 10



ELP132-118-139 Author's Mark 10



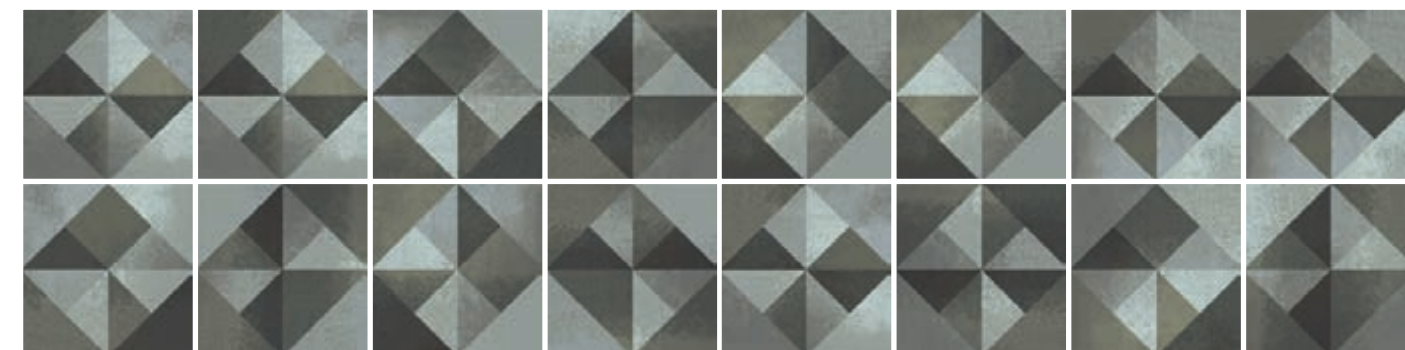
ELP38-13-79 Crafted Fortunes 10

The Clerkenwell collection is a multi tile design — composed of 16 individual tile elements to create one single design. Orders will ship as a randomised assortment of all 16 elements.

Nos designs Clerkenwell sont des créations à multiples dalles - composés de 16 éléments de dalles individuelles afin de créer un motif unique. Les commandes sont expédiées avec un assortiment aléatoire de tous les 16 éléments.

Die Clerkenwell Designs sind Multi-Fliesen Designs - die aus 16 unterschiedlichen und individuellen Einzelfliesen bestehen, um ein einheitliches Muster zu erzeugen. Die Zusammenstellung der 16 Einzelfliesen in den Kartons erfolgt per Zufallsprinzip.

Los diseños Clerkenwell Colour los componen varias losetas - hay 16 elementos diferentes para crear un solo diseño. Cada pedido contendrá una selección aleatoria de los 16 elementos diferentes.



10

For service details see page 27  
Pour connaître les détails du service, allez à la page 27  
Unsere Service Information finden Sie auf Seite 27  
Para detalles sobre nuestras opciones de servicio, vea la página 27





THC180-79-174 Crook's Lair 10



THC103-79-108 Saffron Hill 10



THC13-124-15 Brewhouse Yard 10



THC27-83-144 Strong Opinion 10



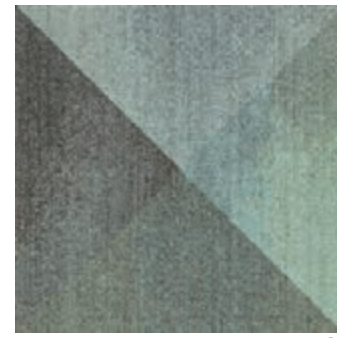
THC149-173-181 Typesetting 10



THC33-137-79 Mosaic Gem 10



THC131-158-118 Tolpuddle 10



THC132-118-139 Creating Order 10



THC38-13-79 Secret Village 10

The Clerkenwell collection is a multi tile design — composed of 16 individual tile elements to create one single design. Orders will ship as a randomised assortment of all 16 elements.

Nos designs Clerkenwell sont des créations à multiples dalles - composés de 16 éléments de dalles individuelles afin de créer un motif unique. Les commandes sont expédiées avec un assortiment aléatoire de tous les 16 éléments.

Die Clerkenwell Designs sind Multi-Fliesen Designs - die aus 16 unterschiedlichen und individuellen Einzelfliesen bestehen, um ein einheitliches Muster zu erzeugen. Die Zusammenstellung der 16 Einzelfliesen in den Kartons erfolgt per Zufallsprinzip.

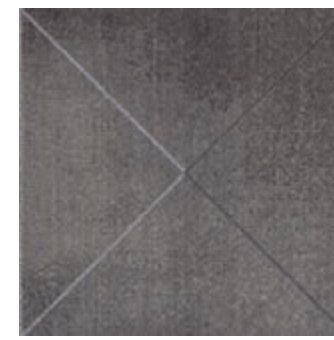
Los diseños Clerkenwell Colour los componen varias losetas - hay 16 elementos diferentes para crear un solo diseño. Cada pedido contendrá una selección aleatoria de los 16 elementos diferentes.



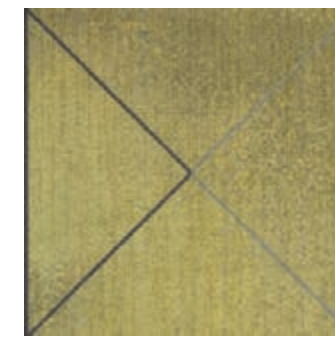




TVL148-171-104 Fifteen Puzzle



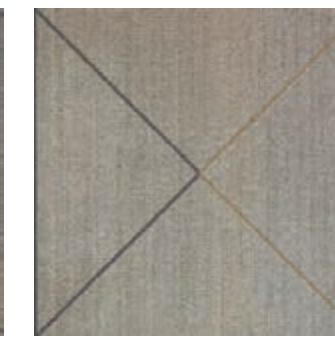
TVL154-180-174 Jack Dawkins



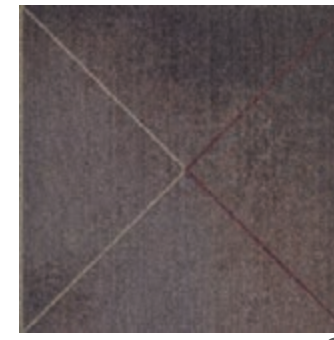
TVL144-118-103 Novel Character



TVL13-172-144 Gentleman's Portrait



TVL12-13-144 Vestry Minutes



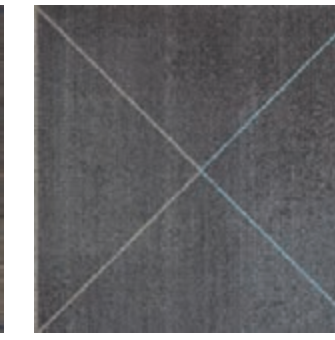
TVL48-137-149 Ironmonger's Row



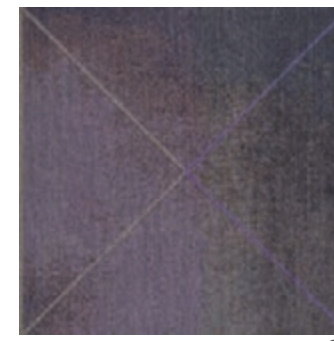
TVL148-171-104 Fifteen Puzzle



TVL73-48-173 Architect's Plan



TVL140-152-118 Charcoal Merchant



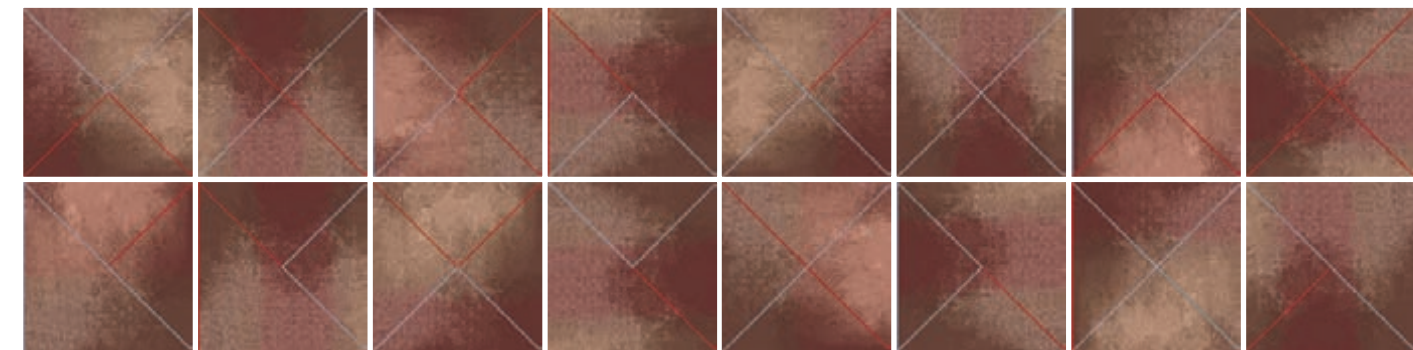
TVL151-171-38 Notebook Plots

The Clerkenwell collection is a multi tile design — composed of 16 individual tile elements to create one single design. Orders will ship as a randomised assortment of all 16 elements.

Nos designs Clerkenwell sont des créations à multiples dalles - composés de 16 éléments de dalles individuelles afin de créer un motif unique. Les commandes sont expédiées avec un assortiment aléatoire de tous les 16 éléments.

Die Clerkenwell Designs sind Multi-Fliesen Designs - die aus 16 unterschiedlichen und individuellen Einzelfliesen bestehen, um ein einheitliches Muster zu erzeugen. Die Zusammenstellung der 16 Einzelfliesen in den Kartons erfolgt per Zufallsprinzip.

Los diseños Clerkenwell Colour los componen varias losetas - hay 16 elementos diferentes para crear un solo diseño. Cada pedido contendrá una selección aleatoria de los 16 elementos diferentes.



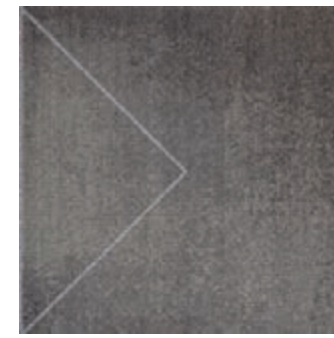
10

For service details see page 27  
 Pour connaître les détails du service, allez à la page 27  
 Unsere Service Information finden Sie auf Seite 27  
 Para detalles sobre nuestras opciones de servicio, vea la página 27



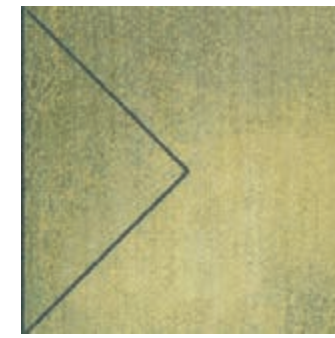


TGP48-79-173 Fog House



TGP180-118-174 Tailor Made

10



TGP118-166-103 Full Bloom

10



TGP48-172-144 Cloth Peg

10



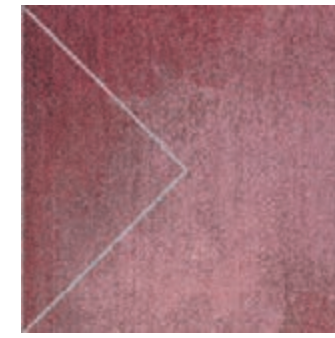
TGP15-144-83 Dame Purecroft

10



TGP48-149-38 Sword Buckler

10



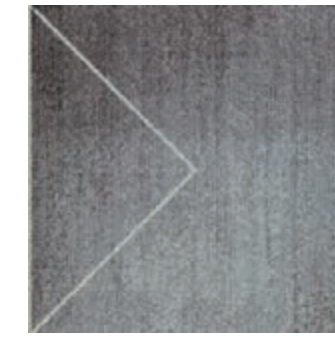
TGP171-110-104 Lady Justice

10



TGP48-79-173 Fog House

10



TGP152-119-118 Behind Bars

10



TGP171-181-38 Velvet Cap

10

The Clerkenwell collection is a multi tile design — composed of 16 individual tile elements to create one single design. Orders will ship as a randomised assortment of all 16 elements.

Nos designs Clerkenwell sont des créations à multiples dalles - composés de 16 éléments de dalles individuelles afin de créer un motif unique. Les commandes sont expédiées avec un assortiment aléatoire de tous les 16 éléments.

Die Clerkenwell Designs sind Multi-Fliesen Designs - die aus 16 unterschiedlichen und individuellen Einzelfliesen bestehen, um ein einheitliches Muster zu erzeugen. Die Zusammenstellung der 16 Einzelfliesen in den Kartons erfolgt per Zufallsprinzip.

Los diseños Clerkenwell Colour los componen varias losetas - hay 16 elementos diferentes para crear un solo diseño. Cada pedido contendrá una selección aleatoria de los 16 elementos diferentes.



10

For service details see page 27  
Pour connaître les détails du service, allez à la page 27

Unsere Service Information finden Sie auf Seite 27

Para detalles sobre nuestras opciones de servicio, vea la página 27





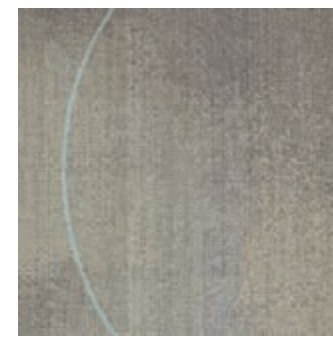
CTV171-181-38 Dram Shop



CTV180-118-174 Sorrell's London 10



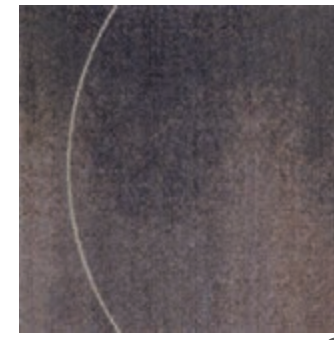
CTV118-166-103 Pear Tree 10



CTV48-172-144 Broadside 10



CTV15-144-83 Silver Cased 10



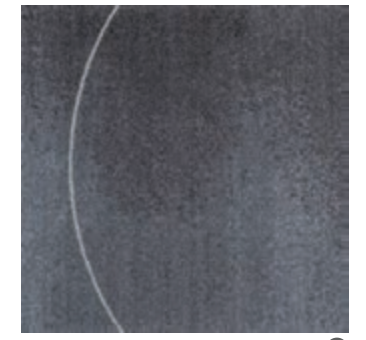
CTV48-149-38 Royal Row 10



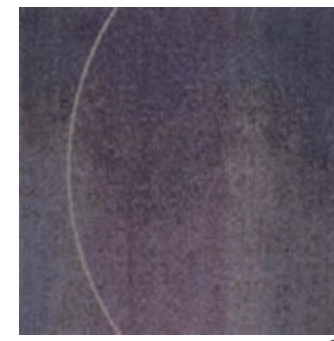
CTV171-110-104 Social Affair 10



CTV48-79-173 Cackle Tub 10



CTV152-119-118 Coin Laundry 10



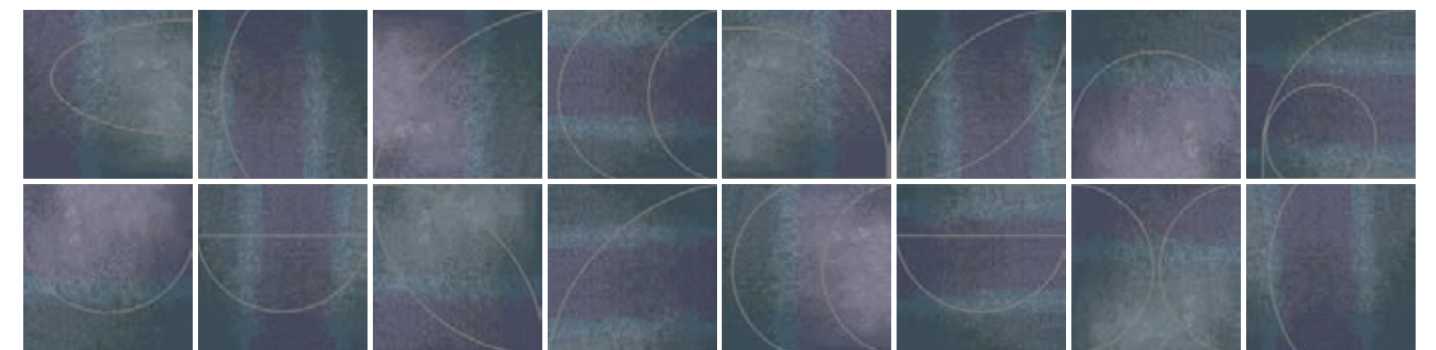
CTV171-181-38 Dram Shop 10

The Clerkenwell collection is a multi tile design — composed of 16 individual tile elements to create one single design. Orders will ship as a randomised assortment of all 16 elements.

Nos designs Clerkenwell sont des créations à multiples dalles - composés de 16 éléments de dalles individuelles afin de créer un motif unique. Les commandes sont expédiées avec un assortiment aléatoire de tous les 16 éléments.

Die Clerkenwell Designs sind Multi-Fliesen Designs - die aus 16 unterschiedlichen und individuellen Einzelfliesen bestehen, um ein einheitliches Muster zu erzeugen. Die Zusammenstellung der 16 Einzelfliesen in den Kartons erfolgt per Zufallsprinzip.

Los diseños Clerkenwell Colour los componen varias losetas - hay 16 elementos diferentes para crear un solo diseño. Cada pedido contendrá una selección aleatoria de los 16 elementos diferentes.



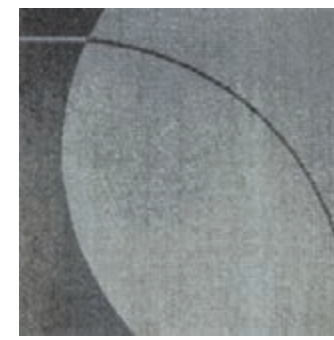
10

For service details see page 27  
 Pour connaître les détails du service, allez à la page 27  
 Unsere Service Information finden Sie auf Seite 27  
 Para detalles sobre nuestras opciones de servicio, vea la página 27

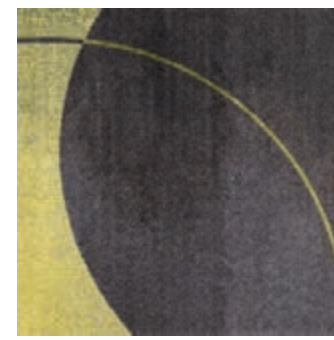




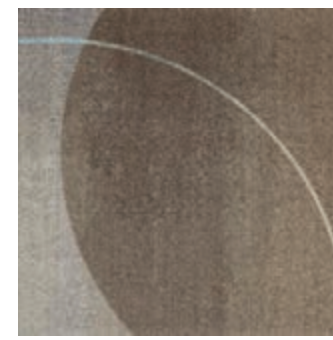
CLERKENWELL / Watch Making WMG13-154-83 Queen Curves  
NATURALLY DRAWN / Watercolour Lesson WLN 144-83 Canvas



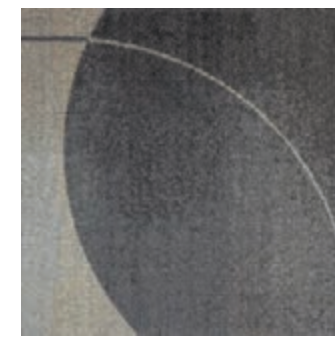
WMG118-180-174 Turn Style 10



WMG118-79-103 Without Question 10



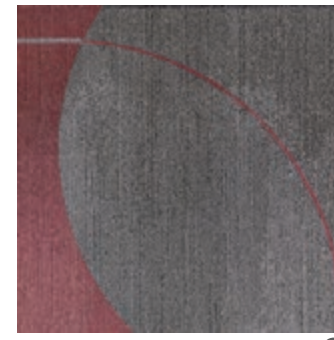
WMG172-124-144 Sugden's Dictionary 10



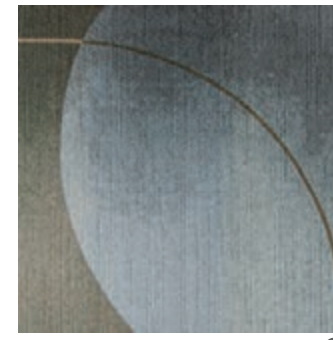
WMG13-154-83 Queen Curves 10



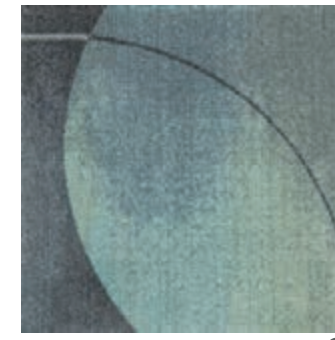
WMG48-104-38 Design Philosophy 10



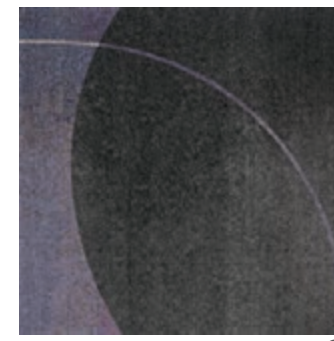
WMG171-174-104 Percy Circus 10



WMG48-157-173 Crossing Tracks 10



WMG152-139-118 Casting Iron 10



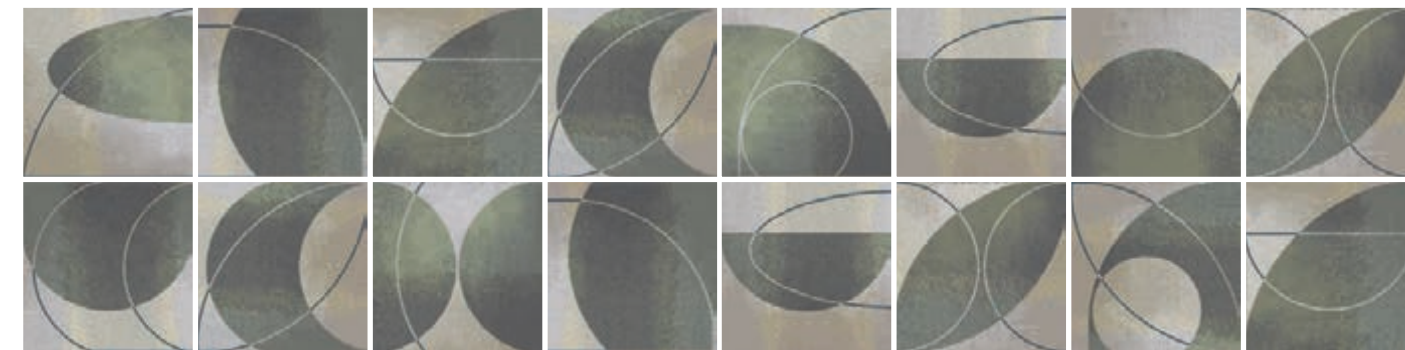
WMG171-154-38 Sydney Grove 10

The Clerkenwell collection is a multi tile design — composed of 16 individual tile elements to create one single design. Orders will ship as a randomised assortment of all 16 elements.

Nos designs Clerkenwell sont des créations à multiples dalles - composés de 16 éléments de dalles individuelles afin de créer un motif unique. Les commandes sont expédiées avec un assortiment aléatoire de tous les 16 éléments.

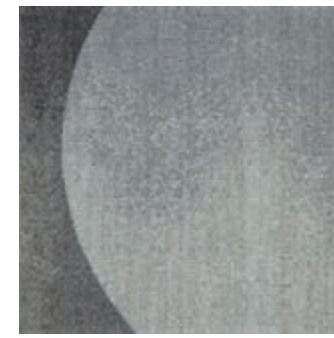
Die Clerkenwell Designs sind Multi-Fliesen Designs - die aus 16 unterschiedlichen und individuellen Einzelfliesen bestehen, um ein einheitliches Muster zu erzeugen. Die Zusammenstellung der 16 Einzelfliesen in den Kartons erfolgt per Zufallsprinzip.

Los diseños Clerkenwell Colour los componen varias losetas - hay 16 elementos diferentes para crear un solo diseño. Cada pedido contendrá una selección aleatoria de los 16 elementos diferentes.



For service details see page 27  
Pour connaître les détails du service, allez à la page 27  
Unsere Service Information finden Sie auf Seite 27  
Para detalles sobre nuestras opciones de servicio, vea la página 27





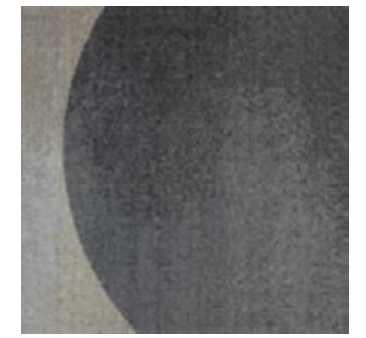
TPE180-174 Fifty Guineas 10



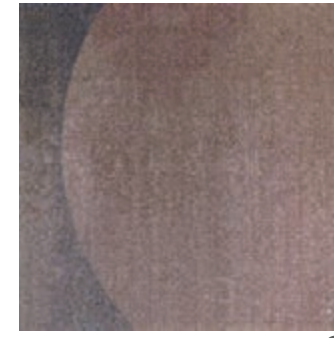
TPE79-103 Well Curated 10



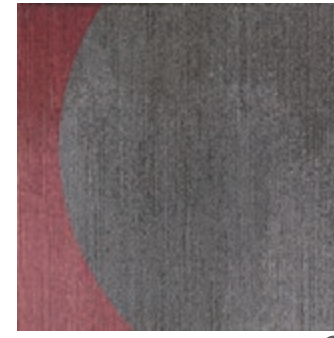
TPE124-144 Gentry's Own 10



TPE154-83 Engine Turner 10



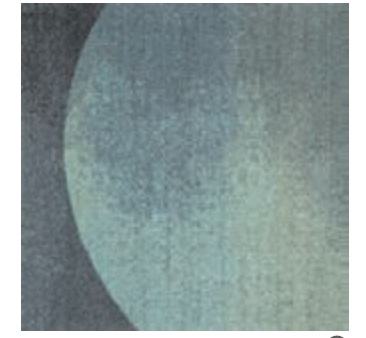
TPE104-38 Silken Purse 10



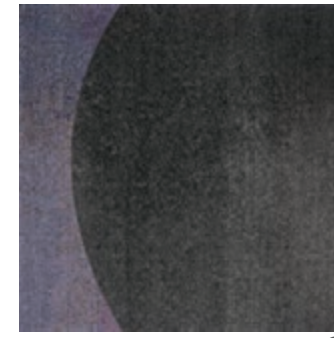
TPE174-104 Five Stops 10



TPE157-173 Cold Bath 10



TPE139-118 Zetter's Pools 10



TPE154-38 Grand Avenue 10

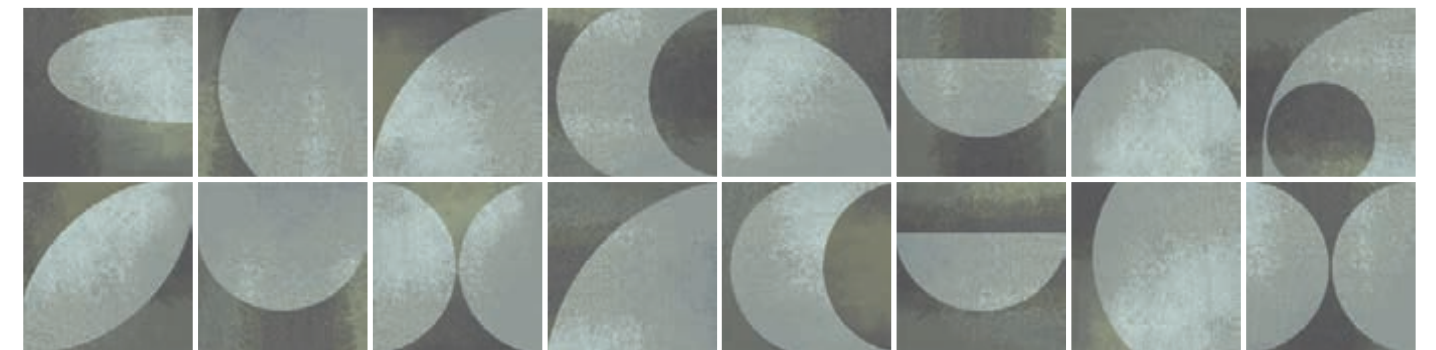
CIRCLES

The Clerkenwell collection is a multi tile design — composed of 16 individual tile elements to create one single design. Orders will ship as a randomised assortment of all 16 elements.

Nos designs Clerkenwell sont des créations à multiples dalles - composés de 16 éléments de dalles individuelles afin de créer un motif unique. Les commandes sont expédiées avec un assortiment aléatoire de tous les 16 éléments.

Die Clerkenwell Designs sind Multi-Fliesen Designs - die aus 16 unterschiedlichen und individuellen Einzelfliesen bestehen, um ein einheitliches Muster zu erzeugen. Die Zusammenstellung der 16 Einzelfliesen in den Kartons erfolgt per Zufallsprinzip.

Los diseños Clerkenwell Colour los componen varias losetas - hay 16 elementos diferentes para crear un solo diseño. Cada pedido contendrá una selección aleatoria de los 16 elementos diferentes.





## SPECIFICATIONS

### SPECIFICATION

**Construction**  
Tufted, Textured Loop Pile

**Face Fibre**  
ECONYL® 100% recycled Nylon 6

**Soil Release**  
StainSmart®

**Finished Face Weight**  
490 g/m<sup>2</sup>

**Gauge**  
47.2/10 cm

**Rows**  
44/10 cm

**Tuft Density**  
207 680/m<sup>2</sup>

**Finished Pile Height**  
2.5 mm

**Standard Backing**  
Comfort Lite 90% recycled open cell polyurethane cushion backing Available with TractionBack® on request

**Nominal Total Thickness**  
8.3 mm

**Tile Size**  
500 x 500 mm

**Nominal Total Weight**  
3 800 g/m<sup>2</sup>

**Tiles per Box**  
22 (5.5m<sup>2</sup>)

### PERFORMANCE

**Flammability (Euroclassification EN13501:1-2002)**  
Class Bfl - s1

**Flammability (Radiant Panel ASTM-E-648)**  
Class 1

**Flammability (Hot metal nut BS4790)**  
Low radius of Char

**Use Classification (EN1307)**  
Class 33 Heavy Commercial Use

**Castor Chair (BS EN 985:2001)**  
Class A - Intensive use (r value ≥ 2.4)

**Static Electricity (ISO 6356)**  
≤ 2,0 KV, Permanent Conductive Fibre

**Impact Sound (ISO 10140-3)**  
31 dB

**Sound absorption (ISO 354)**  
0.25 Class E

**Alpha s values**  
125Hz 0,01, 250Hz 0,07, 500Hz 0,59, 1000Hz 0,18, 2000Hz 0,26, 4000Hz 0,36

### ENVIRONMENTAL

74% recycled content by total product weight including up to 7% post consumer content  
Manufactured in ISO14001 certified location using renewable sources  
GUT & CRI Green Label Plus certified for indoor air quality  
EPD verified  
BRE certified

### GUARANTEES

12 year wear guarantee  
Lifetime Antistatic guarantee  
Latent Defects guarantee

#### Design Copyright - Milliken & Company.

This cushion-back carpet tile product is covered by one or more patents, published applications and/or patents pending. Specifications are subject to normal manufacturing tolerances and may be changed without prior notice. Copies of actual test results are available upon request.

## CLERKENWELL / Angled Walk / Ely Place / Three Corners / Travelling Line / Triangular Path / Circle Top View / Watchmaking / Time Piece

### SPÉCIFICATION

**Construction**  
Tuftée bouclé texturée

**Fibre**  
Nylon 6 ECONYL® composé à 100% de nylon recyclé

**Anti-Salissure**  
StainSmart®

**Poids de fibre**  
490 g/m<sup>2</sup>

**Jauge**  
47,2/10 cm

**Nombre de points**  
44/10 cm

**Densité du tuft**  
207 680/m<sup>2</sup>

**Hauteur du Velours**  
2,5 mm

**Dossier Standard**  
Comfort Lite mousse polyuréthane à cellule ouverte dossier 90% recyclé Disponible avec TractionBack® sur demande

**Epaisseur totale**  
8,3 mm

**Dimension des dalles**  
500 x 500 mm

**Poids total**  
3 800 g/m<sup>2</sup>

**Nombre de dalles par Carton**  
22 (5,5m<sup>2</sup>)

### PERFORMANCE

**Classement feu (Euro classification EN13501:1-2002)**  
Classe Bfl - s1

**Classement feu (Panneau Rayonnant ASTM E648)**  
Classe 1

**Classement feu (Ecrou en métal chaud BS4790)**  
Faible rayon de carbone

**Utilisation (EN1307)**  
Classe 33 pour usage commercial intensif

**Chaise à roulettes (EN985)**  
A - Convient pour un usage normal (r ≥ 2.4)

**Velours Antistatique (ISO 6356)**  
≤ 2,0 KV fibre à transmission permanente

**Isolation des bruits d'impacts (ISO 10140-3)**  
31 dB

**Absorption des bruits aériens (ISO 354)**  
0,25 Classe E

**Valeurs alpha S**  
125Hz 0,01, 250Hz 0,07, 500Hz 0,59, 1000Hz 0,18, 2000Hz 0,26, 4000Hz 0,36

### ENVIRONMENTAL

74% du poids total du produit provient de matériaux recyclés y compris jusqu'à 7% de contenu post consommation  
Fabriqué avec de l'énergie renouvelable  
Certifié GUT & CRI Green Label Plus  
EPD certifié  
Certifié BRE

### GARANTIES

12 ans contre usage  
Antistatique permanent  
Vices cachés

#### Design Copyright - Milliken & Company.

Ce système intégral de dossier en mousse appliqué à ce produit est couvert par un ou plus brevets, applications publiées et/ou brevets en cours. Milliken Contract se réserve le droit de changer ou modifier les données techniques. Il est possible que la moquette diffère légèrement des échantillons présentés.

### DATENBLATT

**Konstruktion**  
Getuftete, texturierte Schlingenware

**Polfasermaterial**  
ECONYL® Nylon 6 aus 100% recycelter Faser

**Schmutzabweisende Ausrüstung**  
StainSmart®

**Poleinsatzgewicht**  
490 g/m<sup>2</sup>

**Teilung**  
47,2/10 cm

**Stiche**  
44/10 cm

**Noppenzahl**  
207 680/m<sup>2</sup>

**Polschichtdicke**  
2,5 mm

**Standard-Rückenmaterial**  
Comfort Lite 90% recycelter Polyurethan-Polsterrücken. Auf Wunsch mit TractionBack®

**Gesamtdicke**  
8,3 mm

**Abmessung Fliese**  
500 x 500 mm

**Gesamtgewicht**  
3 800 g/m<sup>2</sup>

**Fliesen/Karton**  
22 (5,5m<sup>2</sup>)

### BAUPHYSIKALISCHE EIGENSCHAFTEN

**Brennverhalten (und Qualmklasse EN13501:1-2002)**  
Klasse Bfl - s1

**Brennverhalten (Radiant Panel ASTM-E-648)**  
Klasse 1

**Brennverhalten (Hot metal nut BS4790)**  
Geringer Verkohlungsradius

**Klassifikation (EN1307)**  
Klasse 33 Extrem

**Rollenstühle (DIN 54324)**  
Classe 33 pour usage commercial intensif

**bestanden (IR≥ 2.4)**

**Statische Ladung (ISO 6356)**  
A - Convient pour un usage normal (r ≥ 2.4)

**Trittschallverbesserungsmaß (ISO 10140-3)**  
31 dB

**Schallabsorptionsgrad (ISO 354)**  
0,25 Klasse E

**Alpha-s Werte**  
125Hz 0,01, 250Hz 0,07, 500Hz 0,59, 1000Hz 0,18, 2000Hz 0,26, 4000Hz 0,36

### UMWELTEIGENSCHAFTEN

Das Gesamtgewicht enthält 74% recyceltes Material einschließlich bis zu 7% Post-Consumer Recyclingmaterial  
Material hergestellt und zertifiziert nach ISO 14001 unter Nutzung alternativer Energien  
Zertifizierung GuT & CRI Green Label plus für geprüfte Innenraum-Luftqualität  
EPD überprüft  
BRE Zertifizierung

### GARANTIE

12 Jahre auf Verschleiß  
Lebenslange Antistatik  
Latenter Mangel

#### Design Copyright - Milliken & Company.

Diese Polsterrücken-Teppichfliesen werden durch ein oder mehrere Patente durch veröffentlichte Anwendung oder durch angemeldete Patente geschützt. Spezifikationen unterliegen normalen Fertigungstoleranzen und können ohne vorherige Ankündigung geändert werden. Kopien der tatsächlichen Testergebnisse sind auf Anfrage erhältlich.

### ESPECIFICACIONES TÉCNICAS

**Modelo**  
Moqueta modular de bucle con textura

**Fibra**  
Nylon 6 ECONYL® 100% reciclado

**Productos para el tratamiento de la suciedad**  
StainSmart®

**Peso final de la cara superior de la moqueta**  
490 g/m<sup>2</sup>

**Galga**  
47,2/10 cm

**Hileras**  
44/10 cm

**Densidad del bucle**  
207 680/m<sup>2</sup>

**Altura final de la cara superior de la moqueta**  
2,5 mm

**Base estándar**  
Base almohadillada Comfort Lite con un 90% de poliuretano de celda abierta reciclado. Disponible con revestimiento TractionBack® a solicitud del cliente

**Grosor total aproximado de cada loseta**  
8,3 mm

**Tamaño de cada loseta**  
500 x 500 mm

**Peso total aproximado de cada loseta**  
3 800 g/m<sup>2</sup>

**Losetas por caja**  
22 (5,5m<sup>2</sup>)

### RENDIMIENTO

**Inflamabilidad (Euroclasificación EN13501:1-2002)**  
Clase Bfl - s1

**Inflamabilidad (Panel radiante ASTM-E-648)**  
Clase 1

**Inflamabilidad (Hot metal nut BS4790)**  
Pequeño radio de quema

**Clasificación de uso (EN1307)**  
Clase 33 Uso comercial intenso

**Resistencia a sillas con ruedas (EN985)**  
A - uso continuo (r ≥ 2.4)

**Electricidad estática (ISO 6356)**  
≤ 2,0 KV, Fibra Conductora Permanente

**Ruido de impacto (ISO 10140-3)**  
31 dB

**Absorción del sonido (ISO 354)**  
0,25 Clase E

**Valores Alfa S**  
125Hz 0,01, 250Hz 0,07, 500Hz 0,59, 1000Hz 0,18, 2000Hz 0,26, 4000Hz 0,36

### INFORMACIÓN MEDIOAMBIENTAL

El 74% del peso total del producto está compuesto por material reciclado incluyendo hasta un 7% de contenido post-consumidor  
Producto fabricado en una ubicación con certificado ISO14001 utilizando fuentes de energía renovable  
Certificaciones GuT y CRI Green Label Plus sobre la calidad del aire en espacios interiores  
Declaración ambiental de producto verificada  
Certificación BRE

### GARANTÍAS

12 años de garantía frente al desgaste  
Garantía de por vida de antiestaticidad  
Garantía por defectos latentes

#### Copyright del diseño - Milliken & Company.

Esta moqueta con base almohadillada está protegida por una o más patentes, ya aplicadas o, en su caso, pendientes de concesión. Las especificaciones están sujetas al proceso habitual de fabricación, y pueden variar sin previo aviso. Están a disposición del cliente las copias de los resultados de las pruebas realizadas a nuestras moquetas.

## LIGHT REFLECTANCE

### Angled Walk

Reference	LRV (Y) Value
AGW171-33-104 Design Debate	8.2
AGW152-139-118 Georgian Footsteps	9.0
AGW180-118-174 Hatter's Heights	8.7
AGW118-108-103 Horseshoe Luck	22.2
AGW171-181-38 Old Haunts	5.9
AGW48-118-173 Rook's Nest	6.0
AGW172-124-144 The Flintlock	21.2
AGW48-181-149 The Scullery	8.3
AGW13-83-144 Turning Page	22.1

### Ely Place

Reference	LRV (Y) Value
ELP132-118-139 Author's Mark	18.4
ELP38-13-79 Crafted Fortunes	9.0
ELP131-158-118 Lucid Writings	9.9
ELP103-79-108 Mazed Garden	21.6
ELP27-83-144 Old Antiquary	19.5
ELP149-173-181 Poet's Plot	15.0
ELP13-124-15 Rich Distiller	19.4
ELP33-137-79 Turned Jeweller	8.9
ELP180-79-174 Unjust Judge	15.8

### Three Corners

Reference	LRV (Y) Value
THC13-124-15 Brewhouse Yard	14.8
THC132-118-139 Creating Order	17.3
THC180-79-174 Crook's Lair	13.3
THC33-137-79 Mosaic Gem	9.1
THC103-79-108 Saffron Hill	19.4
THC38-13-79 Secret Village	9.6
THC27-83-144 Strong Opinion	16.1
THC131-158-118 Tolpuddle	11.6
THC149-173-181 Typesetting	13.0

### Travelling Line

Reference	LRV (Y) Value
TVL73-48-173 Architect's Plan	11.2
TVL140-152-118 Charcoal Merchant	11.3
TVL148-171-104 Fifteen Puzzle	8.6
TVL13-172-144 Gentleman's Portrait	21.6
TVL48-137-149 Ironmonger's Row	9.3
TVL154-180-174 Jack Dawkins	9.9
TVL151-171-38 Notebook Plots	5.1
TVL144-118-103 Novel Character	28.3
TVL12-13-144 Vestry Minutes	24.1

### Triangular Path

Reference	LRV (Y) Value
TGP48-98-167 Binding Pages	11.7
TGP48-172-144 Cloth Peg	21.3
TGP15-144-83 Dame Purecroft	21.3
TGP48-79-173 Fog House	11.7
TGP118-166-103 Full Bloom	25.2
TGP171-110-104 Lady Justice	13.6
TGP48-149-38 Sword Buckler	9.3
TGP180-118-174 Tailor Made	12.0
TGP171-181-38 Velvet Cap	10.4

### Circle Top View

Reference	LRV (Y) Value
CTV48-172-144 Broadside	21.1
CTV48-79-173 Cackle Tub	11.7
CTV152-119-118 Coin Laundry	8.5
CTV171-181-38 Dram Shop	7.7
CTV118-166-103 Pear Tree	24.4
CTV48-149-38 Royal Row	7.6
CTV15-144-83 Silver Cased	20.1
CTV171-110-104 Social Affair	8.2
CTV180-118-174 Sorrell's London	17.5

### Watchmaking

Reference	LRV (Y) Value
WMG152-139-118 Casting Iron	15.5
WMG48-157-173 Crossing Tracks	13.9
WMG48-104-38 Design Philosophy	12.2
WMG171-174-104 Percy Circus	21.6
WMG13-154-83 Queen Curves	14.3
WMG172-124-144 Sugden's Dictionary	21.6
WMG171-154-38 Sydney Grove	7.1
WMG118-180-174 Turn Style	19.9
WMG118-79-103 Without Question	12.1

### Time Piece

Reference	LRV (Y) Value
TPE157-173 Cold Bath	13.9
TPE154-83 Engine Turner	12.3
TPE180-174 Fifty Guineas	19.6
TPE174-104 Five Stops	10.0
TPE124-144 Gentry's Own	15.4
TPE154-38 Grand Avenue	6.6
TPE104-38 Silken Purse	12.1
TPE79-103 Well Curated	9.6
TPE139-118 Zetter's Pools	16.8

## LA RÉFLEXION LUMINEUSE LICHTREFLEXIONSWERTE REFLEXIÓN DE LA LUZ



13  
DOP-0338-100402  
EN 14041:2004



PRESSIONS DANS L'AIR INTÉRIEUR

**INSTALLATION  
INSTALLATION  
INSTALACIÓN**



Monolithic  
Monolithique  
Monolítico

















Angled Walk, AGW48-118-173 Rook's Nest  
Ely Place, ELP131-158-118 Lucid Writings  
Three Corners, THC131-158-118 Tolpuddle  
Travelling Line, TVL73-48-173 Architect's Plan  
Triangular Path, TGP48-79-173 Fog House

SERVICE

**10** Quick Ship  
**10 Day Service**

Colours indicated with this symbol are included in the 10 Day Service programme—up to 1000 square metres per colour, available for despatch within 10 working days of order placement.

Les coloris indiqués par ce symbole sont inclus dans le service d'envoi rapide 10 jours—jusqu'à 1000 m<sup>2</sup> par coloris, prêt à l'envoi sous 10 jours à compter de votre commande.

Die Farben mit diesem Symbol sind Bestandteil des 10-Tage-Services - bis zu 1000 Quadratmeter pro Farbe können innerhalb von 10 Werktagen ab Bestelleingang versendet werden.

Los colores indicados con este símbolo se incluyen en el programa de envío en 10 días—hasta 1.000 m<sup>2</sup> por color—, y están disponibles para ser enviados en 10 días laborables desde que se realice el pedido.

Quick Ship offer subject to change without notice. See [www.millikencarpet.com](http://www.millikencarpet.com) for latest offer.

L'offre de service d'envoi rapide peut être modifiée sans préavis. Consultez le site [www.millikencarpet.com](http://www.millikencarpet.com) pour découvrir les dernières offres.

Änderungen im Schnellversandangebot vorbehalten. Informieren Sie sich auf [www.millikencarpet.com](http://www.millikencarpet.com) über unser aktuelles Angebot.

Nuestra oferta de Envío Rápido está sujeta a cambios sin previo aviso. Para ver la oferta actualizada, visite [www.millikencarpet.com](http://www.millikencarpet.com).



#### Credits

**p2—Bamse Kragh-Jacobsen**, screenprint, 1960 / **p4—Peter Hedegaard**, Perspective [blue/green], gouache, 1971, / **p8—Peter Hedegaard**, Graded Steps [orange/red], gouache, 1973 / **p10, 14—Leo Arnak Pedersen**, Untitled, acrylic on canvas, 1980 / **p16**, left—**Larry Zox**, Untitled, screenprint, 1980, right—**Peter Hedegaard**, Colour Sequence [blue/green/purple], 1975 / **p18**, left—**Peter Hedegaard**, Colour Sequence [blue/green/purple], 1975, right—**Larry Zox**, Untitled, linocut, 1972 / **p20—Bjarne Winther Troelstrup**, Serigrafi nr II, screenprint, 1987 / **p22—Peter Hedegaard**, Untitled, acrylic on canvas, 1967 / **p26—Winfred Gaul**, Red & Blue, screenprint, 1970  
**Courtesy Rocket Gallery, London**

---

#### CUSTOMER SERVICE

SERVICE CLIENT / KUNDENSERVICE-CENTER / SERVICIO AL CLIENTE

#### UK

T. +44 (0)1942 612 777  
E. carpetenquiries@milliken.com

#### FRANCE

T. 08 05 54 27 77  
E. demandesmoquettes@milliken.com

#### DEUTSCHLAND

T. 0800 7243794  
E. verkauf@milliken.com

#### ESPAÑA

T. +44 (0)1942 612 777  
E. informaciondemoqueta@milliken.com

#### SHOWROOMS

#### LONDON

T. +44 (0)20 7336 7290

5 Berry Street,  
Clerkenwell,  
London EC1V 0AA

#### PARIS

T. +33 (0)1 40 98 06 99

40 Rue Des Mathurins,  
75008 Paris

#### EUROPEAN HEAD OFFICE

SIÈGE EUROPÉEN / EUROPAZENTRALE / SEDE CORPORATIVA EUROPA

T. +44 (0)1942 826 073

Beech Hill Plant,  
Gidlow Lane,  
Wigan WN6 8RN

---

#### Cover image

Collection artwork, created for Milliken by Stuart Daly January 2019

---

#### Version 2 /

Issued May 2019 /  
Publiée Mai 2019 /  
Ausgabe Mai 2019 /  
Expedida mayo 2019

[www.millikencarpet.com](http://www.millikencarpet.com)

Milliken™